

Every Moment Counts.
Every Child Matters.



Prospectus

2024-2025



Every
Moment
Counts.
Every
Child
Matters.





Contents

- 2 Mission Statement
- 3 Message from the Principal
- 4 History and Background
- 6 Classes, Staffing and Governors
- 7 Who's Who?
- 8 Curriculum (Core)
- 8 Curriculum (Non-Core)
- 9 Safeguarding and Pastoral Care
- 10 Extra-Curricular Activities
- 12 Early Birds Service
- 13 Inspection Update 2018
- 14 Digital Services
- 15 Admissions Criteria
- 16 Uniform
- 17 Where to find us



Mission Statement

Killinchy Primary School exists to provide a caring learning community based on Christian principles where every child is treated as an individual. When compared with many others we are a relatively large school however all stakeholders go the extra mile to ensure no compromise is necessary in terms of personal, individual attention.

It is important to everyone at Killinchy PS that we retain close relationships with all members of our school community, extending this beyond pupils to involve family members and community organisations in an ethos of mutual support and respect. Whilst there is a strong emphasis on academic success, the value of a holistic education is equally recognised. Our objective is to produce pupils who understand the value of lifelong learning, respect for others and the importance of making a positive contribution to society.

We aim to achieve this by ensuring all pupils have access to a wide range of experiences and opportunities to achieve success. We promote high standards of behaviour, discipline and academic achievement whilst also recognising that success comes in many forms and that every child develops and progresses at his/her own rate.

Healthy competition is seen as a positive experience for pupils whilst instilling good sportsmanship and a love of participation in exercise and physical activity. Artistic interests are celebrated and nurtured in the form of a wide and varied music curriculum, choral singing, dramatic performances and a superb fine arts programme.

At Killinchy Primary School, every child is encouraged to be the best they can be and should leave having had an all-round outstanding school experience.



Message from the Principal

Dear Parents,

It gives me great pleasure to welcome you! We know that choosing a primary school is a very important decision with the potential to shape the lives of your family and child(ren) for many years to come; it is important that you get it right.

This prospectus is designed to give you a flavour of what Killinchy PS is about but we would also encourage you to come and see for yourself. Of the many things which struck me when I started at Killinchy PS in 2016, most poignant was the strong sense of ownership and belonging between the school and its community; not just amongst the pupils and parents but between the staff too. I consider it a daily privilege to be a part of this fantastic team.

Over the last 5-6 years, the whole school community has been going through a significant period of change at all levels. In addition, we have all endured COVID together and are still recovering. A follow-up inspection in 2018 saw our school move from Grade 3 (of 4) back to Grade 1 with the 3 main areas of schooling assessed as **Very Good, Very Good and Outstanding**. Recent assessment statistics show that, despite the disruption caused by the pandemic, Killinchy PS continues to deliver the highest standards of education (see full section on inspection 2018, page 13).

In January 2020 we were delighted to be announced by the Education Minister as one of a number of schools in line for School Enhancement Project (SEP) funding. Plans are now underway for a major building project which will see significant improvements to our premises and grounds over the next few years! It's a really exciting time to be part of the Killinchy PS family and we'd love you to experience it too!

Best wishes,

Christopher Currie
Principal BEd MEd PQH(NI)





History and Background

Killinchy Primary School was opened in 1983 to replace 5 smaller village schools in the Killinchy Area. Our picturesque site and buildings were originally planned to accommodate a 1-form entry intake however since then we have expanded to our current status of 2-form entry admissions (57 per year) and a total approved enrolment of 350.

Located in the County Down village of Killinchy with stunning views over Strangford Lough, the Mourne Mountains and the surrounding countryside our school provides the perfect setting for children to grow and learn.

In addition to our idyllic setting, we have a long history of academic success, to the extent that many of our families will happily drive further than necessary for their children to attend. But there is much more to Killinchy Primary than just results; over the years we have gained a reputation for being a warm, welcoming, enriching place to be. Parents and visitors regularly comment on the positive atmosphere felt on opening the front door. We are a school dedicated to its families, friends and community. Once you join Killinchy PS, you'll never really leave!







Classes, Staffing and Governors

At the centre of our school is a top class team of teachers and Classroom Assistants, all of whom are personally invested in the pupils and families they serve. Many live in the local community and some even attended Killinchy PS as pupils!

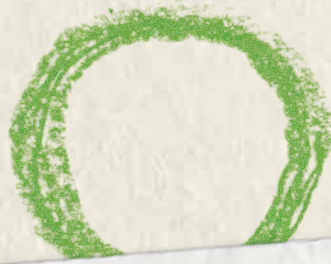
Presently we provide 12 classes and 2 days/week classroom withdrawal Learning Support; it is safe to say that the quality of teaching is a strength of Killinchy PS:

'The teaching staff are outstanding. They are dedicated and caring and have done a tremendous job.'
(Parents' Survey 2016)

'Great staff who always go the extra mile. They are always willing to help/listen and have always dealt with any issues in an incredibly professional and sensitive way.'
(Parents' Survey 2016)

Mrs Lesley Bleakley, a long standing member of staff who was recently nominated for a Pearson National Teaching Award





Teaching Staff

- P1: Mrs Small
- P1/2: Mrs Hanlon
- P2: Mrs Bell (Head of Foundation)
- P3: Mrs Hamilton / Mrs S. Bleakley
- P3/4: Mrs Connor
- P4: Mrs L. Bleakley (Head of Key Stage 1)
- P5: Mrs Barker / Mrs Ryan
- P5: Mrs Kinnier
- P6: Mrs McBride
- P6: Mr Millar
- P7: Mrs Leckey (Head of Key Stage 2)
- P7: Miss Finlay (VP)

Learning Support: Mrs Corbridge
Senior Clerical Officer: Mrs D. Dornan
Building Supervisor: Mr A. McKeag

Classroom Assistants

- P1: Miss McLean and Mrs Caughey / Mrs Corr
- P2: Mrs Brown-Martin and Mrs Lyons
- Composite Support:** Mrs Gill / Mrs Pyper

SEN Classroom Assistants

Mrs McBroom (P1), Miss McKendry (P2), Mrs Shannon (P4), Mrs McVeigh (P4), Miss McIvreen (P5), Mrs Whitten (P5), Mrs Lepireva (P5), Miss Leckey (P5), Mrs Cheyne (P5), Mrs Matthews (P6), Mrs Parsons (P6), Mrs Foster (P6), Mrs Ritchie (P6), Mrs Jackson (P6), Mrs Robertson (P7) and Miss McCormick (P7).

Board of Governors

Mr Pete Struthers (Parent)
Mr Maurice Johnston (EA)
Mrs Emma Anderson (Parent)
Mr Nick Mathison MLA (EA)
Miss Kerry Finlay (Teacher/VP)

Rev. Adrian Dorrian (Transferor)
Mr Gary McCreery (Transferor)
Transferor 3 TBC
Transferor 4 TBC



Curriculum

Literacy, Numeracy and ICT



In Killinchy P.S., teaching and learning follows a very clear pattern of plan, do, review. The core subjects of Literacy, Numeracy and ICT are delivered in a cross-curricular fashion ensuring every child receives a balanced learning experience in the key skills - the foundation stones for all learning.

Core lessons in Literacy, Numeracy and ICT are linked to World Around Us topics with a strong emphasis on developing pupils' ability to apply their knowledge across a range of subjects. Teaching/learning is focused not just on content but also on pupils' Thinking Skills, Personal Capabilities and Problem-Solving capacities. We like to think of ourselves as a school where traditional thinking on literacy and numeracy meets the modern-day world of technology!



Creative and Expressive

Running alongside our core subjects is a rich and varied creative and expressive curriculum enabling pupils to experience all the joys on offer through music, art and drama. Both class-based and private instrumental tuition are available and the school year is punctuated throughout by public performances large and small which are always well received by pupils and parents alike! On occasion you will be forgiven for thinking you have accidentally arrived at the Grand Opera House!

'The children's wider skills enable them to express themselves well through art, music and sport and when communicating with adults.' (Inspection Report 2017)

Special Educational Needs

The 'Code of Practice' for Special Educational Needs and more recently the updated re-publication (March 2017) is followed as a guide for staff providing for SEN and Additional Needs.

Further to our dedicated SENCO, Mrs Kathryn Leckey, Killinchy PS is also very fortunate to provide 2 days' worth of Learning Support in addition to peripatetic support from the Cottown and ASCET services. With places in high demand and class sizes above the Northern Ireland average this is essential provision enabling us to meet the needs of children with Special Educational (and/or Additional) Needs. We pride ourselves on outstanding provision for pupils with SEN. If applicable, we encourage you to contact us directly for specific details on how we will meet your child's individual needs.

'The learning support provided by Miss Brown is FANTASTIC!' (Parents' Survey 2016)



Safeguarding and Pastoral Care

Pupil safety and well-being is our absolute top priority, above all else. There are members of staff in our school whose specific responsibility it is to handle concerns of this nature; they are:

Mrs Hanlon (P1): Designated Teacher for Child Protection (DT)

Miss Finlay (P7 / VP): Deputy Designated Teacher for Child Protection (DDT)

Parents are advised that if they have a concern of any type, **please do not investigate**, simply mention it to either member of staff above and they will know what to do.

But Safeguarding is more than just 'Child Protection', it encompasses a whole range of areas designed to ensure your children are safe when at school. Since November 2016 we have worked intensely to ensure these policies and procedures are of the highest standard. Any of the following can be easily accessed via our school website:

Positive Discipline and Anti-Bullying Policies, Acceptable Use of the Internet and Digital Technologies, Administration of Medications Policy, Child Protection Policy, Pastoral Care Policy, Attendance Policy, Social Media Policy, First Aid Policy, Intimate Care Policy, Health and Safety Policy, Risk Assessment Policy, Site Security Policy, Fire Safety Policy, Evacuation and Fire Drills Policy, Internet Filtering Policy and E-Safety Policy.

Religious Education (RE) and Collective Worship

At Killinchy, we are committed to fostering an inclusive environment that respects the diverse beliefs of all our students and their families.

In accordance with Article 21(5) of the Education and Libraries (Northern Ireland) Order 1986, we fully acknowledge parents' legal right to withdraw their children from Religious Education (RE) and/or collective worship. We work closely with families to provide suitable alternatives, ensuring every child feels supported and valued in their educational journey. Our school is dedicated to upholding these rights while promoting a respectful and inclusive community for all.

To withdraw a child from RE or Collective Worship, parents can simply notify their child(ren)'s teacher at any time via any of the normal communication channels.





Extra-Curricular Activities



Extra-Curricular Activities are an important part of wider school life at Killinchy PS. There are a range of after-school clubs on offer, all of which are designed to provide pupils the chance to 'delve a little deeper' into personal interests which might not always be available during normal class time!

Clubs are provided by a mixture of teachers and external providers and cover a breadth of sporting, musical, artistic and educational interests - there's something to suit everyone across a wide range of age-groups!





Throughout their time in school your child will have the opportunity to get involved in after-school clubs for:

- Cricket
- Speed Stacks
- Lingotots Spanish
- Residential Trips
- Miniversity
- Tennis
- Senior Choir
- Hockey
- Football (jnr / snr)
- Gymnastics
- Active NI Multisports
- Basketball
- CAST Speech and Drama
- iRock
- Dramatic Performances



If you have an idea for a club or something you'd like us to offer we'll do all we can to make it happen!



Early Birds Service

The Killinchy PS 'Early Birds' service is designed to support working parents who need to get onto the road in good time in the mornings! It's essentially a 'wrap-around-care' service aimed at assisting working parents meet the demands of childcare costs in an increasingly difficult financial climate.

Cost: £4/day 8:00am - 8:45am

Bookings are made online via our school app and, if you wish, you can even pay using Childcare vouchers!

We do not have the space to provide an in-house after-school childcare service but we work very closely with a number of organisations who do: Lisbane Afterschools, Killinchy Afterschools and Right Rascals Private Day Nursery.

All of the above provide drop-offs and pick-ups to Killinchy PS; places can be booked via links on their Facebook pages or by contacting them directly.



INSPECTION UPDATE 2018



'Thank you to the whole staff team - the long hours, hard work, team work and sheer determination has enabled us to re-establish a brilliant learning environment for our children. As Principal, I could not be more proud of Killinchy P.S.' Chris Currie, Principal

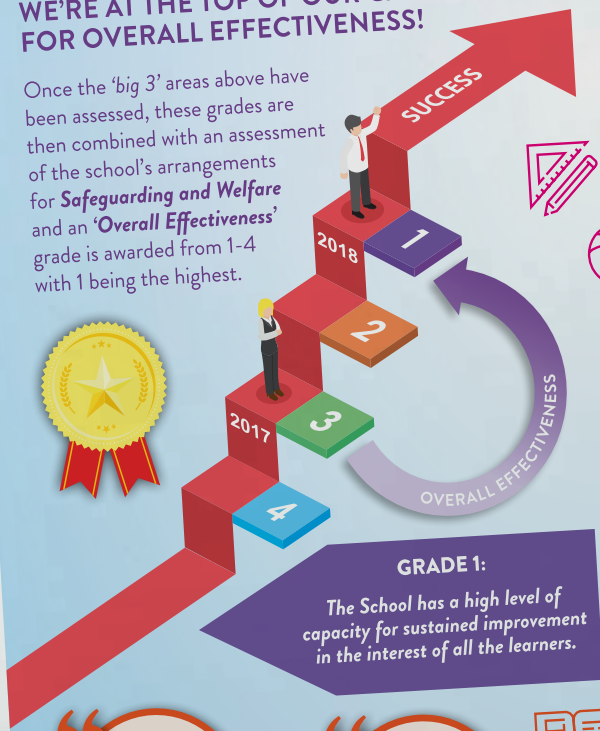
WE'RE A CATEGORY 1 SCHOOL AGAIN! INSPECTION 2017 VS INSPECTION 2018: WHAT YOU NEED TO KNOW:



- Outstanding
- Very good
- Good
- Important area(s) for improvement
- Requires significant improvement
- Requires urgent improvement

WE'RE AT THE TOP OF OUR GAME FOR OVERALL EFFECTIVENESS!

Once the 'big 3' areas above have been assessed, these grades are then combined with an assessment of the school's arrangements for **Safeguarding and Welfare** and an 'Overall Effectiveness' grade is awarded from 1-4 with 1 being the highest.



GRADE 1:
The School has a high level of capacity for sustained improvement in the interest of all the learners.

The governors are carrying out their roles and responsibilities more effectively.

There can be a high degree of confidence in the aspects of governance.

LEADERSHIP AND MANAGEMENT 2018...

@KillinchyPS www.killinchyps.com

OUTCOMES FOR LEARNERS 2018...

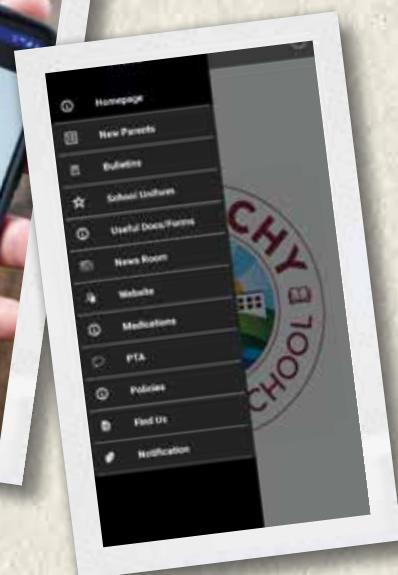
- The children have a very good understanding of problem-solving skills and draw on a wider range of mathematical strategies as they progress through the school.
- The quality of the children's writing in their books and classwork is of a very high standard; including very good formative writing achieved in the early years.
- Almost all of the children are achieving as expected or above in both literacy and numeracy.

QUALITY OF PROVISION 2018...

- A wider range of teaching strategies and an appropriate differentiation to meet the needs of the children.
- (There is now) a consistent whole-school approach to planning.
- All of the lessons observed were good or better. The majority (of the lessons) were very good or outstanding.

The principal has been pivotal to the significant improvements in leadership and management by addressing successfully, and very swiftly, the shortcomings found during the original inspection.

The professional, collegial efforts and commitment of the staff and supported by the now highly effective co-ordinators has transformed learning and teaching in the school.



Digital Services and Communication

High standards of communication are central to effective home/school partnerships so at Killinchy PS we have embraced modern technology as our main mode of contact. Paper notes buried at the bottom of schoolbags are a thing of the past!

School App

In September 2019 we introduced our new, bespoke school app for booking/payment of school meals and clubs then as the year progressed, we extended it to include sections for new parents, newsletters, helpful documents and links, ordering school uniform, completion of medical/absence forms and a whole host of other features designed to make home-school communication faster, easier and better! The school app is now our main administrative tool for existing parents- easily downloadable from the App Store or Google Play.

School Website

Thanks to the introduction of our app, our school website no longer needs updating and regular maintenance. It now exists primarily as a web presence for visitors and prospective new parents. You will not find much detail there, everything now goes through the app!

Twitter

In addition to general good fun, we use Twitter as a quick and informal tool for sharing news and reminders with such as sports results, messages of thanks and PTA photos etc.

Online Payments

Since May 2017 parents have been able to pay school bills using our online cashless facility. This has proven to be very popular and significantly reduced the admin burden on both parents and school staff.



Admissions Criteria

A detailed copy of our Admissions Policy can be downloaded from the 'Policies' section of www.killinchyps.com however for those wishing to enrol a child in P1, you may find the following helpful. Children will be allocated places using the following criteria:

- 1) Children of compulsory school age who have a sibling or half-sibling attending the school or who have attended in the past. At the Board of Governors discretion, exceptions may be made for prospective pupils whose sibling(s) attend (or attended) a Special School.
- 2) Children whose normal place of residence is closer to Killinchy PS than any other controlled primary school by measurement of a straight line distance from the pupil's home to the school as determined by Google Maps' geodesic measuring tool; applied in rank order by increasing distance.





Uniform

At Killinchy P.S. both staff and pupils take pride in their smart appearance. Clear expectations on uniform are a key building block on which we build high standards of presentation in every aspect of school life. Educational Research shows clear positive correlations between high expectations of school uniform and high levels of pupil behaviour, self-esteem and a sense of belonging.

In a close community like Killinchy, maintaining a positive image of our school is paramount to its success and good presentation is a key part of this process.

Our Uniform

Boys

School sweatshirt
School Polo Shirt
Grey trousers or shorts
Black shoes (not trainers)*

Girls

School sweatshirt/cardigan**
School Polo Shirt
Grey skirt
Grey socks or
Dark coloured tights
Black shoes (not trainers)*



*Trainers are not permitted as an official part of school uniform but may be worn with permission if an activity requires it- such as P.E. or break/lunch times. These can be kept in school if necessary.

**In the summer term girls may wear red/white checked summer dresses if they wish, however this is not essential.



Where to find us:

From Comber Square:

- Leave the Square at the Danske Bank corner and drive to the end of the road;
- At the roundabout, go straight on (Killinchy Road) 'The Garage' Texaco' will appear on your left;
- Drive on out this road approximately 8 miles, going through the village of Lisbane;
- On arriving in Balloo village, turn left immediately after the Balloo House restaurant;
- After approximately 1 mile you will reach the village of Killinchy;
- Drive past the entrance to 'The Spires' housing development on the right, through a twisty bit of road and take the next right into Main Street;
- Follow Main Street and take the 2nd right into Strangford View, we are at the bottom of the cul-de-sac.

From Ballygowan:

- At the main roundabout in Ballygowan, take the road for Killyleagh/Killinchy;
- Take the 2nd left, it comes up quite quickly after about 200m;
- Follow this road to the end where you will reach Balloo village;
- Turn right at the junction and drive past Balloo House restaurant on the left;
- Turn left immediately after the Balloo House restaurant;
- After approximately 1 mile you will reach the village of Killinchy;
- Drive past the entrance to 'The Spires' housing development on the right, through a twisty bit of road and take the next right into Main Street;
- Follow Main Street and take the 2nd right into Strangford View, we are at the bottom of the cul-de-sac.

From Killyleagh:

- Drive out of Killyleagh on the main road towards Comber;
- Stay on this road for about 8 miles;
- Eventually you will reach Balloo village;
- After you come over the brow of the hill, turn right, just before you reach Balloo House;
- After approximately 1 mile you will reach the village of Killinchy;
- Drive past the entrance to 'The Spires' housing development on the right, through a twisty bit of road and take the next right into Main Street;
- Follow Main Street and take the 2nd right into Strangford View, we are at the bottom of the cul-de-sac.





Main Street Killinchy
Co. Down BT23 6PN
Tel: 028 9754 1132
Email: info@killinchyps.newtownards.ni.sch.uk
@KillinchyPS
www.killinchyps.com

